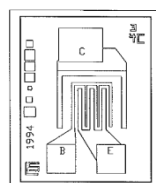
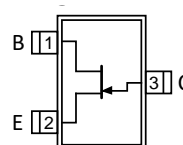


LOW SATURATION NPN TRANSISTOR IN COMPACT PACKAGES

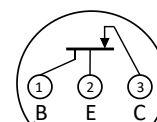
Absolute Maximum Ratings	
@ 25 °C (unless otherwise stated)	
Maximum Temperatures	
Storage Temperature	-65 to +150°C
Junction Operating Temperature	-55 to +150°C
Maximum Power Dissipation	
Power Dissipation @ +25°C	350mW
Maximum Currents	
Collector Current	10mA
Maximum Voltages	
Collector to Emitter Voltage	80V
Collector to Base Voltage	80V
Emitter to Base Voltage	4.0V



DIE
Top View



SOT-23 3L
Top View



TO-92
Top View



Features & Benefits

- Low Saturation Voltage: Improves efficiency and minimizes power loss.
- Compact Packaging: Available in Die Form (wafer pack), SOT-23 (3L) for surface mount applications and TO-92 (3L) for through-hole applications.

Applications

- Switching circuits
- Amplification in analog circuits
- Signal processing
- Consumer electronics

Description

This NPN high-speed switching transistor is designed for high-speed switching applications in both analog and digital circuits. Available in Die Form (wafer pack), SOT-23 (3L) and TO-92 (3L) packages, it offers low saturation voltage. Ideal for general-purpose switching and signal processing, this transistor is suited for a variety of industrial and consumer electronics applications.

Electrical Characteristics @ 25 °C (Unless Otherwise Stated)

PARAMETER	TEST CONDITIONS	MIN	MAX	UNIT
BV_{CEO}	IC=1mA, IB=0	80	---	V
BV_{CBO}	IC=100uA, IE=0	80	---	V
BV_{EBO}	IE=100uA, IC=0	4	---	V
ICBO	VCB=60V, IE=0	---	50	nA
h_{FE}	IC=1.5mA, VCE=10V	30	150	---
V_{CE (SAT)}	IC=10mA, IB=1mA	---	0.25	V

Notes

1. Absolute maximum ratings are limiting values above which serviceability may be impaired.
2. Pulse Test: $PW \leq 300\mu s$, Duty Cycle $\leq 3\%$
3. All characteristics MIN/TYP/MAX numbers are absolute values. Negative values indicate electrical polarity only. Information furnished by Linear Integrated Systems is believed to be accurate and reliable. However, no responsibility is assumed for its use; nor for any infringement of patents or other rights of third parties which may result from its use. No license is granted by implication or otherwise under any patent or patent rights of Linear Integrated Systems.

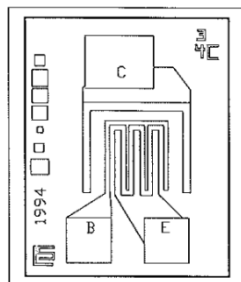
Ordering Information

Standard Part Call-Out
LS3250S DIE
LS3250S SOT-23 3L RoHS
LS3250S TO-92 3L RoHS
Select Part Call-out
Select parts include SEL+4 digit numeric code
LS3250S DIE SELXXXX
LS3250S SOT-23 3L RoHS SELXXXX
LS3250S TO-92 3L RoHS SELXXXX

Package Dimensions

DIE PACKAGING:

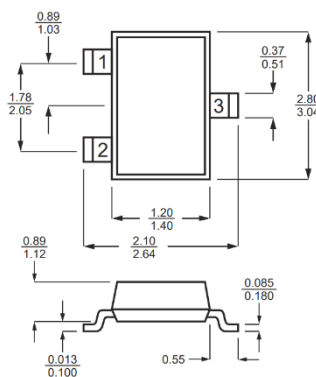
Tan Colored Waffle Pack



Size: 18 x 21 +/- 2mils

SOT-23 3L:

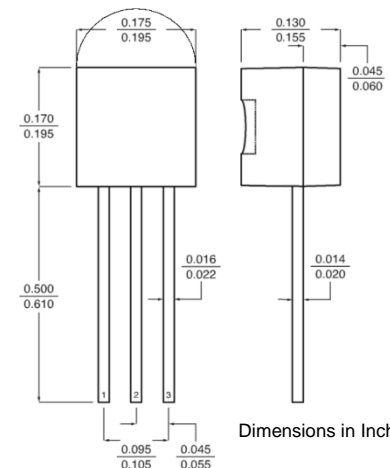
Pin 1 = B, Pin 2 = E, Pin 3 = C



Dimensions in Millimeters

TO-92 3L:

Pin 1 = B, Pin 2 = E, Pin 3 = C



Dimensions in Inches

Advanced Screening & Customization Options

Advanced screening options are available for our diverse product lineup, featuring N-Channel and P-Channel JFETs, High-Speed N-Channel Lateral DMOS Switches, Single and Quad Current-Regulating Diodes, Ultra Low-Leakage Diodes, NPN and PNP Bipolar Transistors, N-Channel and P-Channel Small Signal MOSFETs, and BIFET devices. Our special screening covers all the parameters listed in the standard data sheet, including comprehensive package pin-out.

Connect with our experienced technical team to discuss your specific needs and tailor your requirements—email us at support@linearsystems.com or call (510) 490-9160. MOQ applies to these specialized services.